

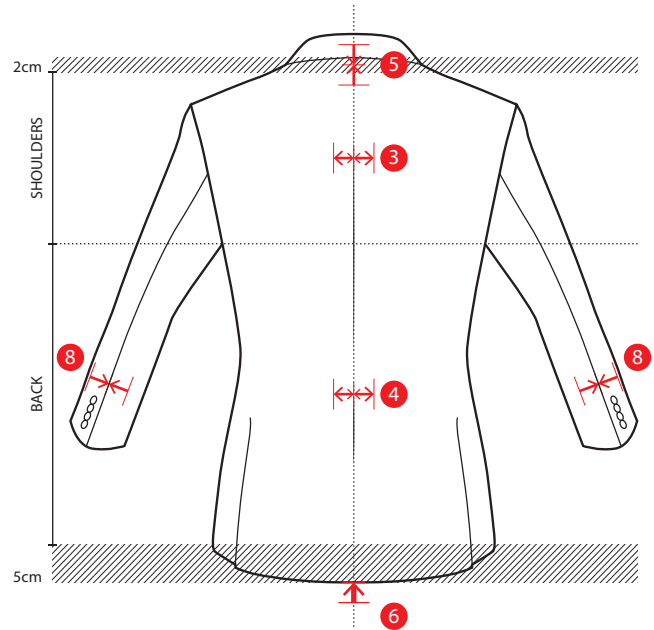
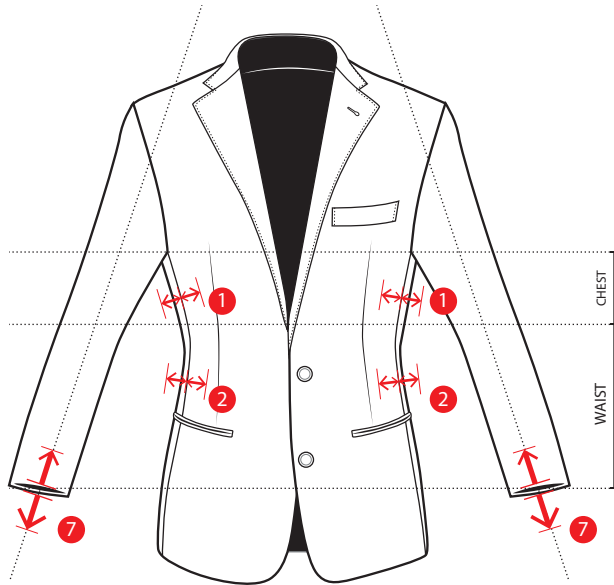
TAILORING NAME

CUSTOMER NAME

ORDER CODE

DATE

DAY MONTH YEAR



1	CHEST (front quarters) +/-1,5 cm (per piece)
cm	It is possible to widen/narrow the jacket between the underarm and the pocket. Modifications to the upper part are to be marked as "chest," modifications to the lower part are to be marked as "waist." It is possible to widen the chest and waist up to 1.5cm per piece.
2	WAIST (FRONT QUARTERS) +/-1.5 cm (per piece)
cm	It is possible to widen/narrow the jacket between the underarm and the pocket. Modifications to the upper part are to be marked as "chest," modifications to the lower part are to be marked as "waist." It is possible to widen the chest and waist up to 1.5cm per piece.
3	SHOULDERS (CHEST) +1,5 cm/-3 cm
cm	It is possible to widen/narrow the jacket from 2cm above and 5cm below. Alterations to the parts above the pleats are to be marked as "shoulder," alterations to the parts below the pleats are to be marked as "back." It is possible to widen the shoulders and back up to 1.5cm. It is possible to narrow the shoulders and back up to 3cm.
4	BACK (WAIST) +2 cm/-3 cm
cm	It is possible to widen/narrow the jacket from 2cm above and 5cm below. Alterations to the parts above the pleats are to be marked as "shoulder," alterations to the parts below the pleats are to be marked as "back." It is possible to widen the shoulders and back up to 3cm. It is possible to narrow the shoulders and back up to 5cm.
5	BACK OF THE NECK -2 cm
cm	It is possible to narrow the back of the neck. The back of the neck can be narrowed up to 3cm. It is not possible to widen the back of the neck.
6	LENGTH OF THE JACKET -3 cm
cm	It is possible to shorten the jacket up to 3cm. It is not possible to lengthen the jacket.
7	SLEEVE LENGTH +2 cm/-1,5 cm
cm	The sleeve can be lengthened up to 2cm. It is possible to shorten the sleeve up to 1.5cm by reducing the distance to the first button. For larger reductions please consult Customer Care.
8	SLEEVE WIDTH -2 cm
cm	It is possible to tighten the sleeve. The sleeve can be tightened up to 2cm. It is not possible to widen the sleeve.

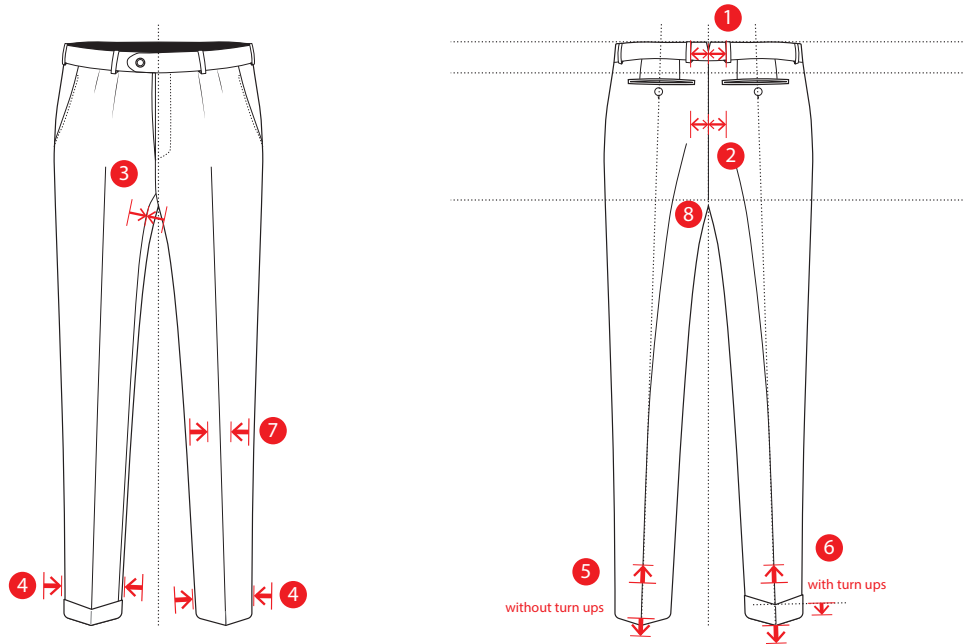
Note:

TAILORING NAME

CUSTOMER NAME

ORDER CODE

DATE DAY MONTH YEAR



1	WAIST +3 cm/-5 cm
cm	It is possible to widen/narrow the trousers above the crotch. Alterations to the upper part (above the pockets) are to be marked as "waist." Alterations to the lower part (below the pockets) are to be marked as "gusset." It is possible to widen the waist up to 3cm. The maximum to tighten is up to where the rear pockets show.
2	GUSSET +2 cm/-3 cm
cm	It is possible to widen/narrow the trousers above the crotch. Alterations to the upper part (above the pockets) are to be marked as "waist." Alterations to the lower part (below the pockets) are to be marked as "gusset." It is possible to widen the gusset up to 2cm.
3	LEG -2 cm/+1 cm
cm	It is possible to tighten the leg up to 2cm up to the crotch. It is possible to widen the leg up to 1cm.
4	TROUSER BOTTOMS +2 cm (1 cm per part)/-∞
cm	It is possible to widen the bottom of the trousers up to 2cm. There are no limits for tightening trousers. In this case you need to communicate the half-length, i.e. half the required change.
5	TROUSER LENGTH (WITHOUT TURN UPS) +3 cm/-∞
cm	It is possible to lengthen the trousers up to 4cm. There are no limits to shortening trousers.
6	TROUSER LENGTH (WITH TURN UPS) +1 cm/-∞
cm	It is possible to lengthen the trousers up to 1cm (the turn up is reduced by 0.5cm). There are no limits to shortening trousers.
7	LEG WIDTH +2 cm/-5 cm
cm	It is possible to widen by 1cm per part from the gusset to the bottom.
8	CROTCH -1 cm
cm	This can be tightened by taking fabric from the rear part. This cannot be widened.

Note:

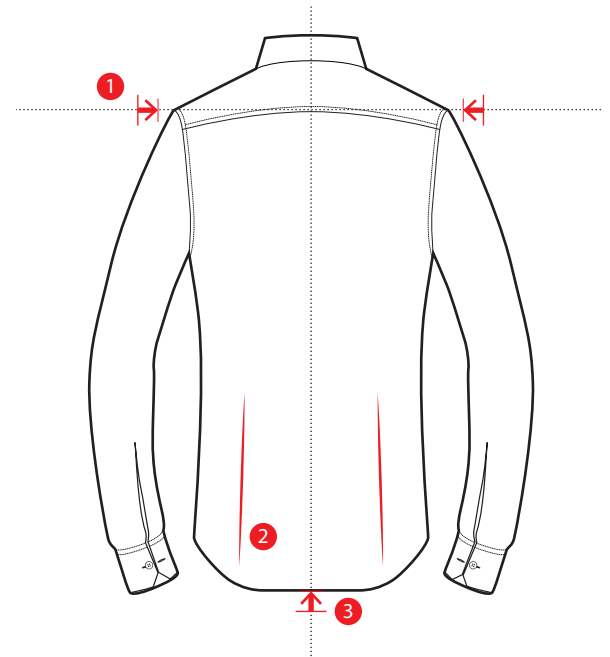
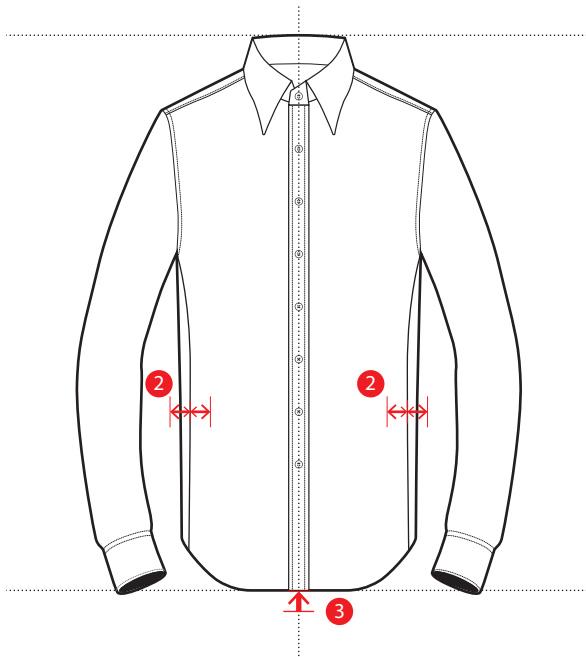
TAILORING NAME

CUSTOMER NAME

ORDER CODE

DATE

DAY MONTH YEAR



1 cm	SHOULDER WIDTH -1,5 cm The shoulders can be tightened up to 1.5cm. It is not possible to widen the shoulder width.
2 cm	WIDTH -2 cm The shirt width can be reduced up to 2cm. It is not possible to widen the shirt.
3 cm	LENGTH -5 cm The shirt can be shortened up to 1cm. It is not possible to lengthen the shirt.

Note: